

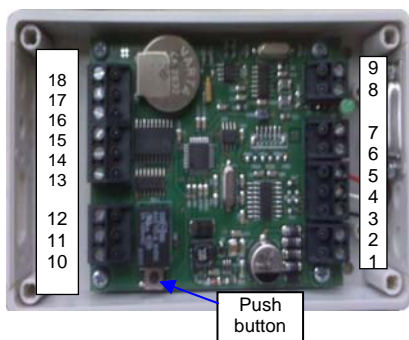


Technical Data Sheet Reader/ Leser 7 Plus

low cost 125 kHz-RFID-standalone-reader for access control systems

Frequency	125 kHz
Read Distance	proximity / approx. 7cm
Interface	RS232
Transponder Types	read only / EM4102 (or compatible)
Dimensions	84 x 68 x 20mm / with housing: 125 x 75 x 28mm
Weight	54g / with housing w.D-SUB-connector (9pins): 130g
Temperature Range	0°C – 45°C
Power Supply	7V AC – 20V AC, 7V DC – 30V DC
Current Consumption	typ. 50mA/12V power supply-75mA if relais switched
Connection Type	screw- /plugtype terminals
Technical Certificates	CE
Features	<ul style="list-style-type: none"> - stores up to 100 transponders and 2.500 events with RTC - relay switching time up to 127min. possible - programming by Software "LeserPlusManager"V.1.6 with LED - low power consumption - 5 additional outputs

10. relay NC (normally closed)
11. relay NO (normally open)
12. relay COM (common)
13. VIN (output power for OpenCollector-outputs)
14. OUT6 (OpenCollector output, max 200 mA)
15. OUT5 (OpenCollector output, max 100 mA)
16. OUT4 (OpenCollector output, max 100 mA)
17. OUT3 (OpenCollector output, max 100 mA)
18. OUT2 (OpenCollector output, max 100 mA)



1. AC2 (7 to 30V DC, 7 to 20V AC)
2. AC1 (7 to 30V DC, 7 to 20V AC)
3. GND for RS232
4. RX (connect to TX of PC)
5. TX (connect to RX of PC)
6. GND (for external push-button)
7. Push-button input (connected to 5V with pull up resistor of app. 5k)
8. ANT2
9. ANT1

Codatex Hainzmaier GmbH & Co.KG

Ischlerbahnstraße 15, A-5020 Salzburg, Tel.: +43/662/454 393.0 Fax: +43/662/454 393-19
 Email: info@codatex.com web:www.codatex.com